



SAEZ HT-47



Max Hook Radius: **154' (47m)**

Capacity @ Max Hook Radius: **2,650 lbs.** with Super Lift **3,000 lbs.**

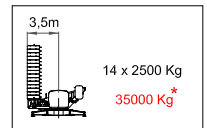
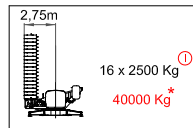
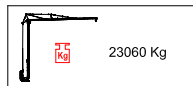
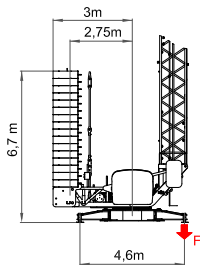
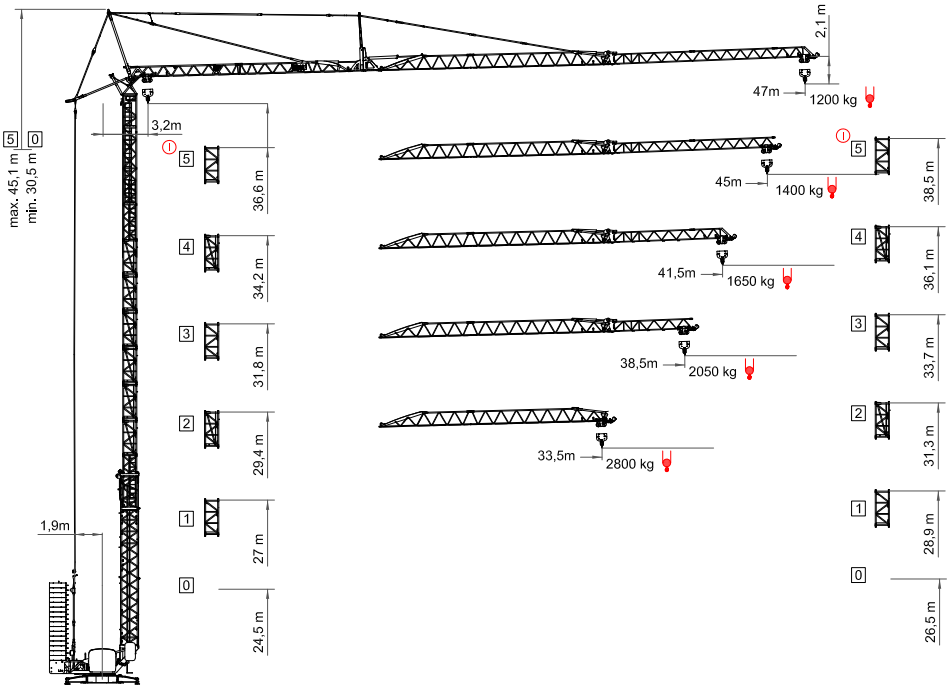
Max Capacity 2 Part Operation: **13,230 lbs.**

Hook Height: **125'** No capacity deduct at full height.

Power Requirement: 240v or 480v, **Single or Three Phase.**



Ph. 801.223.7085
Mike Kokkola / Brandon Lloyd
office@jaykorentals.com
www.jaykorentals.com



F See instruction manual

▲ Peso de la grúa sin tren de transporte y sin lastre / Dead weight without transport axles and without ballast / Konstruktionsgewicht ohne transportachse ohne ballast / Poids de construction sans essieux et sans lest / Peso della gru senza assali e senza zavorra

Ⓜ Peso de lastre / Ballast weight / Ballastgewicht / Poids du lest / Peso zavorra rotante

* Peso de lastre de montaje / Ballast weight of erection / Ballastgewicht / Poids du lest de montage / Peso zavorra rotante di montaggio

① Consultarnos - Consultateci - Consult us - Nous consulter - Auf anfrage - советоваться

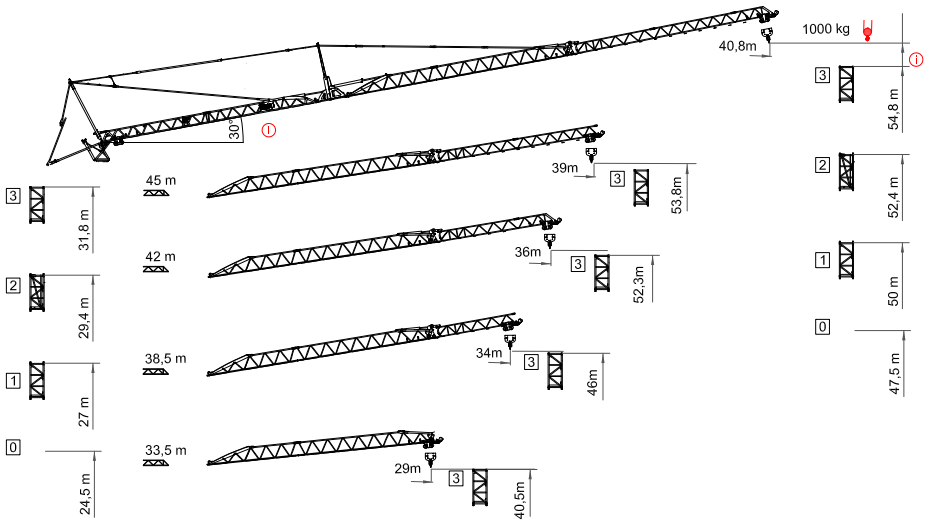
Curvas de cargas - Load diagrams - Lastkurven - Courbes de charges - Curve di carico - График грузоподъёмности

SUPER LIFT

| JIB | 12,7 | 13,6 | 14 | 15,7 | 17,5 | 18 | 20 | 22 | 24 | 26 | 28 | 30 | 32 | 33,5 | 38,5 | 41,5 | 45 | 47 | m |
|------|------|------|------|------|------|------|------|------|------|------|------|------|------|------|------|------|------|------|----|
| 47 | 6000 | 5707 | 5520 | 4835 | 4241 | 4114 | 3641 | 3260 | 2945 | 2685 | 2472 | 2280 | 2117 | 2010 | 1705 | 1580 | 1417 | 1360 | Kg |
| 45 | 6000 | 6000 | 5930 | 5160 | 4535 | 4400 | 3905 | 3504 | 3175 | 2903 | 2671 | 2471 | 2300 | 2183 | 1865 | 1700 | 1570 | Kg | |
| 41,5 | 6000 | 6000 | 5810 | 5565 | 4920 | 4620 | 4305 | 3775 | 3443 | 3170 | 3100 | 2710 | 2575 | 2445 | 2095 | 1885 | Kg | | |
| 38,5 | 6000 | 6000 | 6000 | 6000 | 5360 | 5203 | 4625 | 4165 | 3785 | 3465 | 3200 | 2965 | 2765 | 2635 | 2265 | Kg | | | |
| 33,5 | 6000 | 6000 | 6000 | 6000 | 6000 | 5940 | 5315 | 4815 | 4405 | 4060 | 3765 | 3515 | 3300 | 3152 | Kg | | | | |

| JIB | 12,7 | 13,6 | 14 | 15,7 | 17,5 | 18 | 20 | 22 | 24 | 26 | 28 | 30 | 32 | 33,5 | 38,5 | 41,5 | 45 | 47 | m |
|------|------|------|------|------|------|------|------|------|------|------|------|------|------|------|------|------|------|------|----|
| 47 m | 6000 | 5510 | 5320 | 4640 | 4047 | 3920 | 3450 | 3070 | 2760 | 2500 | 2290 | 2100 | 1940 | 1833 | 1535 | 1410 | 1254 | 1200 | Kg |
| 45 m | 6000 | 6000 | 5800 | 5056 | 4416 | 4276 | 3770 | 3360 | 3025 | 2750 | 2511 | 2308 | 2133 | 2016 | 1694 | 1530 | 1400 | Kg | |
| 42 m | 6000 | 6000 | 5720 | 5540 | 4830 | 4520 | 4155 | 3600 | 3250 | 2965 | 2875 | 2490 | 2350 | 2220 | 1870 | 1650 | Kg | | |
| 38,5 | 6000 | 6000 | 6000 | 6000 | 5248 | 5084 | 4485 | 4007 | 3615 | 3285 | 3010 | 2772 | 2565 | 2430 | 2050 | Kg | | | |
| 33,5 | 6000 | 6000 | 6000 | 6000 | 6000 | 5814 | 5135 | 4590 | 4145 | 3775 | 3460 | 3190 | 2956 | 2800 | Kg | | | | |






Flecha izada - Luffing jib - Ausleger in steilstellung - Flèche relevée - Braccio impennato



| JIB | 18 | 20 | 23 | 26 | 29 | 31 | 34 | 37 | 40 | 40,8 | m |
|------|------|------|------|------|------|------|------|------|------|------|----|
| 47 m | 3000 | 2550 | 2180 | 1800 | 1600 | 1500 | 1250 | 1175 | 1100 | 1000 | Kg |



SL-SUPERLIFT Otras velocidades y características de funcionamiento – Variant speeds and service conditions – Abweichende Geschwindigkeiten und Betriebsbedingungen – Vitesses et conditions de fonctionnement différentes – Differenti velocità e condizioni di funzionamento – Нестандартные скорости и условия эксплуатации

Mecanismos - Mechanisms - Antriebe - Mécanismes - Meccanismi - Приводы

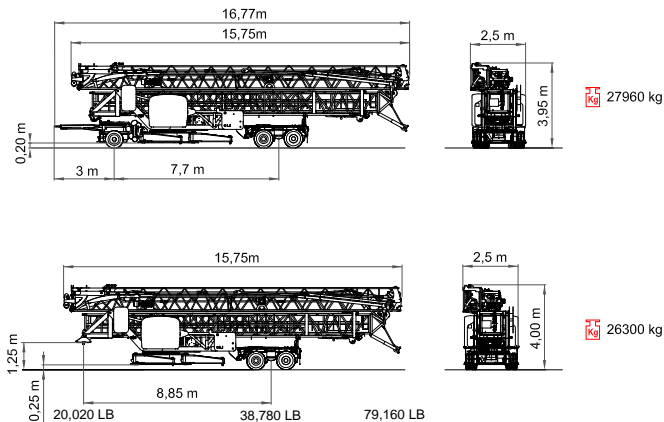
| | | | | | |
|---|-------|---|------|------|-----|
| 20Hp (15Kw) INV 400V 50-60Hz | |  | | | |
|  | m/min | 12 | 25 | 45 | 65 |
| | Kg | 6000 | 3000 | 1500 | 500 |
| | Kw | 15 | | | |
|  | m/min | 15 | 35 | 50 | |
| | Kw | 4,5 | | | |
|  | r.p.m | 0,25 | 0,5 | 0,8 | |
| | N.m. | 30 | | | |
|  | Kw | 9 | | | |

-  Elevación / Hoisting / Heben / Levage / Sollevamento
 -  Distribución / Trolleying / Katzfahren / Distribution / Distribuzione
 -  Orientación / Swivling / Schwenken / Orientation / Rotazione
 -  Montaje / Erection / Montage / Montage / Montaggio
- ① Consultamos - Consultated - Consult us - Nous consulter - Auf anfrage - советоваться

20Hp (15Kw) - INV

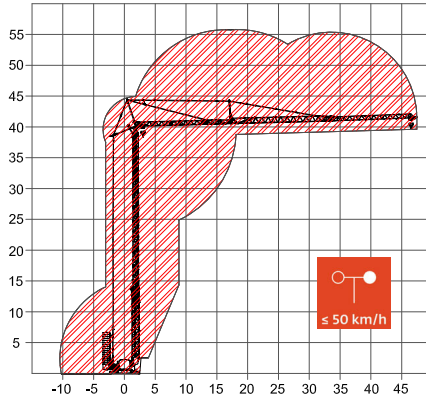
| | | | | | | | |
|---|--|--|-----------------------|---------------------|-----------------------------|-----------------------------|-----------------------------|
|  2000/14/CEE 2005/88/CEE |  2006/95/CEE | 400V 50Hz I _{max} = 72A Fuse= 80A | TOTAL POWER 22 KVA | GENERATOR 75 KVA | 100m 4x25mm ² | 150m 4x35mm ² | 200m 4x35mm ² |
| | | 480V 60Hz I _{max} = 60A Fuse= 70A | | | | | |

Dimensiones y transporte- dimensions and transport - Abmessungen und Transport- dimensions et des transporte - dimensioni e trasporti - Размеры и транспорта



Montaje - Erection - Montage - Montage - Montaggio

H



| Pos. Item Rep. Voce Pos. Ref. | Anz. Qty. Ota. Cant. Cant. | | | | L (m) | X (m) | Y (m) | kg |
|-------------------------------|----------------------------|--|--|--|-------|-------|-------|----|
| 1 | 4 | | | | | | | |
| 2 | 2 | | | | | | | |
| | | | | | | | | |
| 3 | 1 | | | | | | | |
| 4 | 1 | | | | | | | |
| 5 | 1 | | | | | | | |
| 6 | 1 | | | | | | | |
| 7 | 1 | | | | | | | |